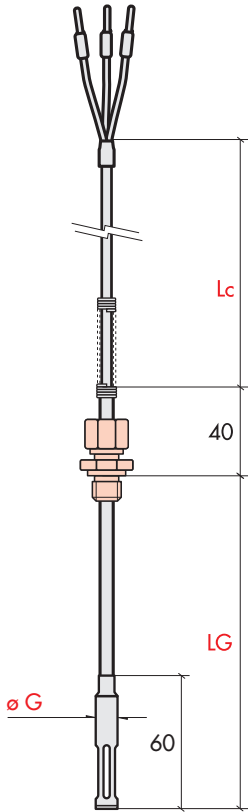




Sensors for aerothermal detection

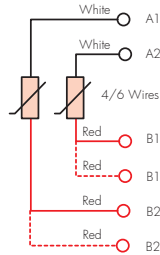
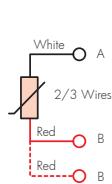
Straight/drilled fast response RTD, \varnothing 10 mm with connection wire and adjustable compression fitting



Connections

Single element

Dual element



Type of wire	Diam. \varnothing G mm	Base code	Value in Ω at 0°C	Element N° and limits	Type of RTD	Sheath material	Sheath LG mm	Type of thread	Wire length Lc m	Type of termination
TS 0 200°C max	10	E3 D10	P Pt100 DIN - IEC	0 3-wire single Cl. B (1 DIN)	3 Sealed 250 °C max	B AISI 316	0150	S None	05 0.5	P
Ts T 220°C max	10	E3 G10	Y Pt1000 DIN - IEC	1 3-wire single Cl. A (1/2 DIN)			0200	F 1/4" Gas L15 CH - 17	10 1	D
							0250		15 1.5	G
							0300		20 2	S
							0350		25 2.5	
							0400		30 3	
							0450		35 3.5	
							0500		40 4	
									45 4.5	
									50 5	
									00 10	
							L min 0090			

Note: for LG e Lc other lengths upon request. Code example: LG = 135mm cod. 0135 / Lc = 7m cod. 70, * Non available with 4 wires.

Product code example: **E3 D10 - P 0 3 - B 0150 - F - 10 P**

Straight/drilled RTD with TS 0 wire, \varnothing 10 mm sheath, 3-wire Pt100 single elem., class B (1 DIN), sealed element, AISI 316 sheath, 150mm length, 1/4" Gas adjustable compression fitting, 1m wire and \varnothing 1.8 terminals.